

Adaptor CF-F / ISO-KF

INFICON CF quality fittings are manufactured according to ISO 3669 and the latest TS/ ISO 3669-2 standard. INFICON Ultra high vacuum fittings are designed for applications down to 1×10^{-12} mbar and bakeout temperatures up to 400°C.

BENEFITS

- World wide logistics
- Design and measures follow strictly international respected standards
- Surface finish, welds, material specifications and cleanliness meet or exceed high vacuum specifications
- 2011/65/EU RoHS compliant



ORDER INFORMATION

Type	DN 16 ISO- KF / 16 CF-F	DN 25 ISO- KF / 16 CF-F	DN 16 ISO- KF / 40 CF-F	DN 25 ISO- KF / 40 CF-F	DN 40 ISO- KF / 40 CF-F	DN 40 ISO- KF / 63 CF-F
Transition piece DN 100 CF/40 ISO- KF						
Transition piece, inox, DN 16CF / 16KF	213-251					
Transition piece, inox, DN 16CF / 25KF		213-252				
Transition piece, inox, DN 40CF / 16KF			213-254			
Transition piece, inox, DN 40CF / 25KF				213-255		
Transition piece, inox, DN 40CF / 40KF					213-256	
Transition piece, inox, DN 63CF / 40KF						213-259

SPECIFICATIONS

Type	DN 16 ISO- KF / 16 CF-F	DN 25 ISO- KF / 16 CF-F	DN 16 ISO- KF / 40 CF-F	DN 25 ISO- KF / 40 CF-F	DN 40 ISO- KF / 40 CF-F	DN 40 ISO- KF / 63 CF-F
Dimension A	35	35	30	30	50	35
Dimension B	16	16	16	26	37	41
Material	Stainless Steel 304L / 1.4306	Stainless Steel 304L / 1.4306	Stainless Steel 304L / 1.4306	Stainless Steel 304L / 1.4306	Stainless Steel 304L / 1.4306	Stainless Steel 304L / 1.4306

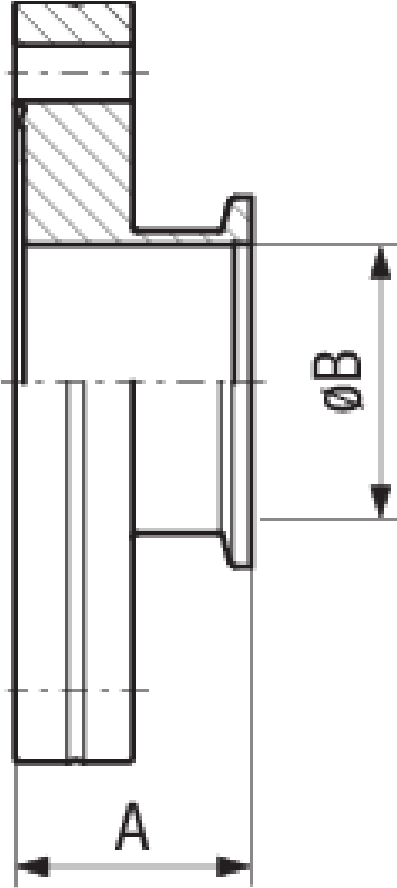
**DN 40 ISO-
KF / 100 CF-
F**

213-262

SPECIFICATIONS

Type	DN 40 ISO- KF / 100 CF- F
Dimension A	50
Dimension B	41
Material	Stainless Steel 304L / 1.4306

DIMENSIONS



www.inficon.com reachus@inficon.com

Due to our continuing program of product improvements, specifications are subject to change without notice.
RateWatcher is a trademark of INFICON. All other trademarks are the property of their respective owners.

(2018-08) © 2018 INFICON